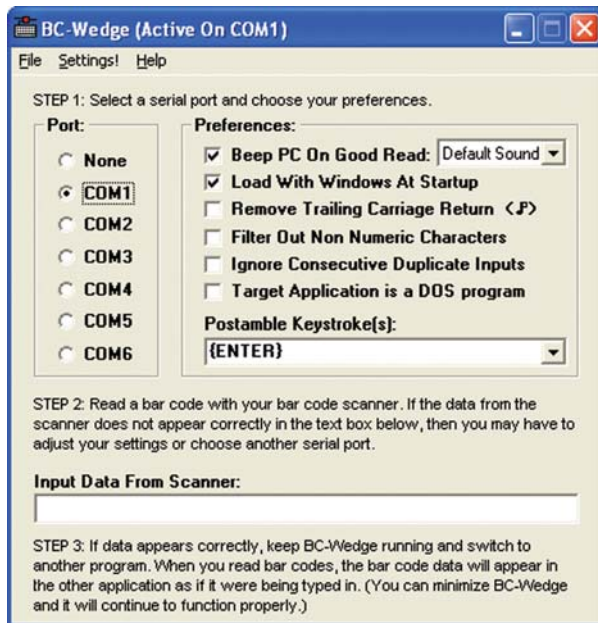


# BC-Wedge™

**Bar Code scanner data direct into any Windows or DOS application.**

*Easily input data from any RS232 bar code scanner directly into any Windows (or DOS) application.*

BC-Wedge is a highly simplified version of WinWedge that is designed to work with bar code scanners only. BC-Wedge runs in the background and feeds bar code data directly to other programs running in the foreground. BC-Wedge works by “stuffing the keyboard buffer” with data received from a bar code scanner so that any application running in the foreground would see the data as if it were being typed in on the keyboard.



## BC-Wedge

- Provides real-time input of bar code data directly into any Windows or DOS program.
- Extremely easy to use with a one screen, one minute set-up.
- Easily configure BC-Wedge to send additional user-defined keystrokes after each bar code is entered.
- Supports all versions of Windows and DOS.
- Supports COM1 to COM4.

## Compatibility Requirements

BC-Wedge is available for all versions of Windows and DOS and requires minimal system resources. Bar code scanners used with BC-Wedge must have internal decode and have an RS232 serial output.

## Free Demo

Download a fully functional evaluation version of BC-Wedge at [www.taltech.com](http://www.taltech.com)



2101 Brandywine Street  
Philadelphia PA 19130 USA

TEL: 800 722 6004  
215 496 0222  
FAX: 215 496 0322  
WEB: [www.TALtech.com](http://www.TALtech.com)

FREE DEMOS AVAILABLE AT [WWW.TALtech.COM](http://WWW.TALtech.COM)  
DATA COLLECTION • COMMUNICATION • BAR CODE SOFTWARE SOLUTIONS

