

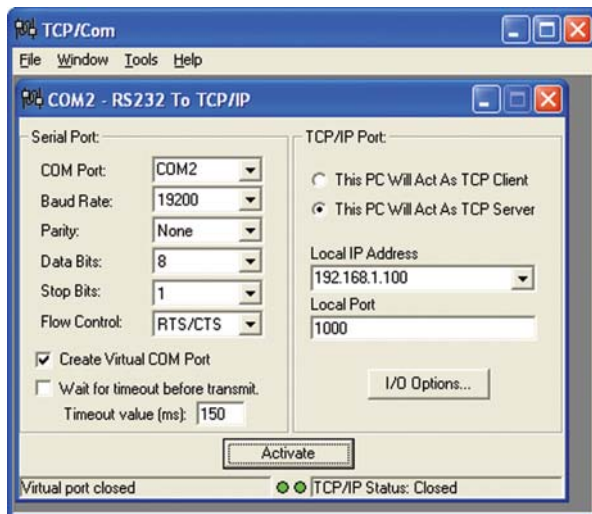
# TCP-Com™

## Serial to TCP/IP Converter Software

*TCP-Com is a software based RS232 to TCP/IP converter. TCP-Com allows any of the serial ports on your PC to send and receive data directly over any TCP/IP network. Use TCP-Com to turn a PC into a multi-port "Serial Device Server" so that you can connect any RS232 serial device directly to a TCP/IP network and communicate with that device from any other workstation in the same network or across the Internet.*

TCP-Com can also create "Virtual" RS232 serial ports that are actually connections to a TCP/IP port. This allows you to use any existing serial communications software to send and receive data across a TCP/IP network.

Attach any RS232 device including, bar code scanners, sensors, gages, meters, telephone systems, laboratory instruments, industrial controllers, modems, printers, etc. – to the serial ports of a PC and communicate with that device from any other computer in the same network (or across the Internet).



This would allow you to use WinWedge, TCP-Wedge, Telnet, HyperTerminal or any other RS232 or TCP/IP communications software to read or write to the serial device from any PC connected to the same network.

### Typical applications for TCP-Com

- Turn a Windows PC into a Serial Device Server (supports up to 99 devices simultaneously).
- Send or receive data over a TCP/IP network using any serial communications program.
- Open COM ports located on another computer in your network as if they were installed locally.
- Use your network or the Internet as a giant serial cable.
- Use TCP-Com to feed data from a serial device to multiple serial communications programs running on either the same PC or in different PCs on a network.

### Ease of Use

To use TCP-Com, just select the serial port and the communications parameters. Then enter the IP Address and TCP/IP port number that you want to use and Activate TCP-Com. It's that easy! To add more connections, simply select "New" from the File menu. TCP-Com will allow you to create up to 99 RS232 to TCP/IP connections all active simultaneously.

### Free for 30 days

Download a fully functional 30-day evaluation copy of TCP-Com at: [www.taltech.com](http://www.taltech.com)



2101 Brandywine Street  
Philadelphia PA 19130 USA

TEL: 800 722 6004  
215 496 0222  
FAX: 215 496 0322  
WEB: [www.TALtech.com](http://www.TALtech.com)

FREE DEMOS AVAILABLE AT [WWW.TALtech.COM](http://WWW.TALtech.COM)  
DATA COLLECTION • COMMUNICATION • BAR CODE SOFTWARE SOLUTIONS

